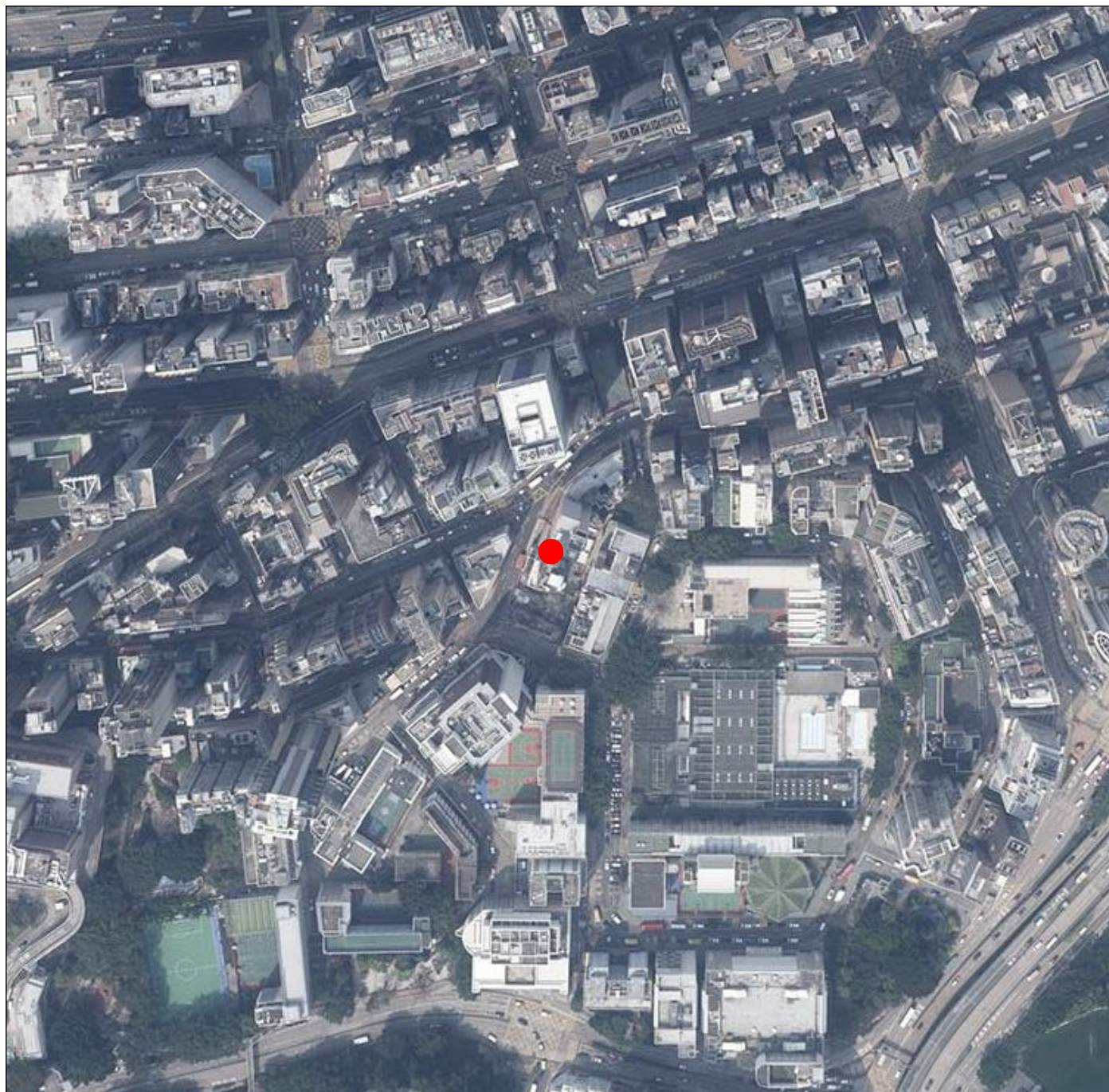


7 AERIAL PHOTOGRAPH OF THE DEVELOPMENT 發展項目的鳥瞰照片



Adopted from part of the aerial photograph taken by the Survey and Mapping Office of the Lands Department at a flying height of 6,000 feet, photo No. E219003C, dated 8 March 2024.

摘錄自地政總署測繪處於2024年3月8日在6,000呎的飛行高度拍攝之鳥瞰照片，照片編號為E219003C。

Survey and Mapping Office, Lands Department, The Government of HKSAR© Copyright reserved - reproduction by permission only.

香港特別行政區政府地政總署測繪處 © 版權所有，未經准許，不得翻印。

Notes:

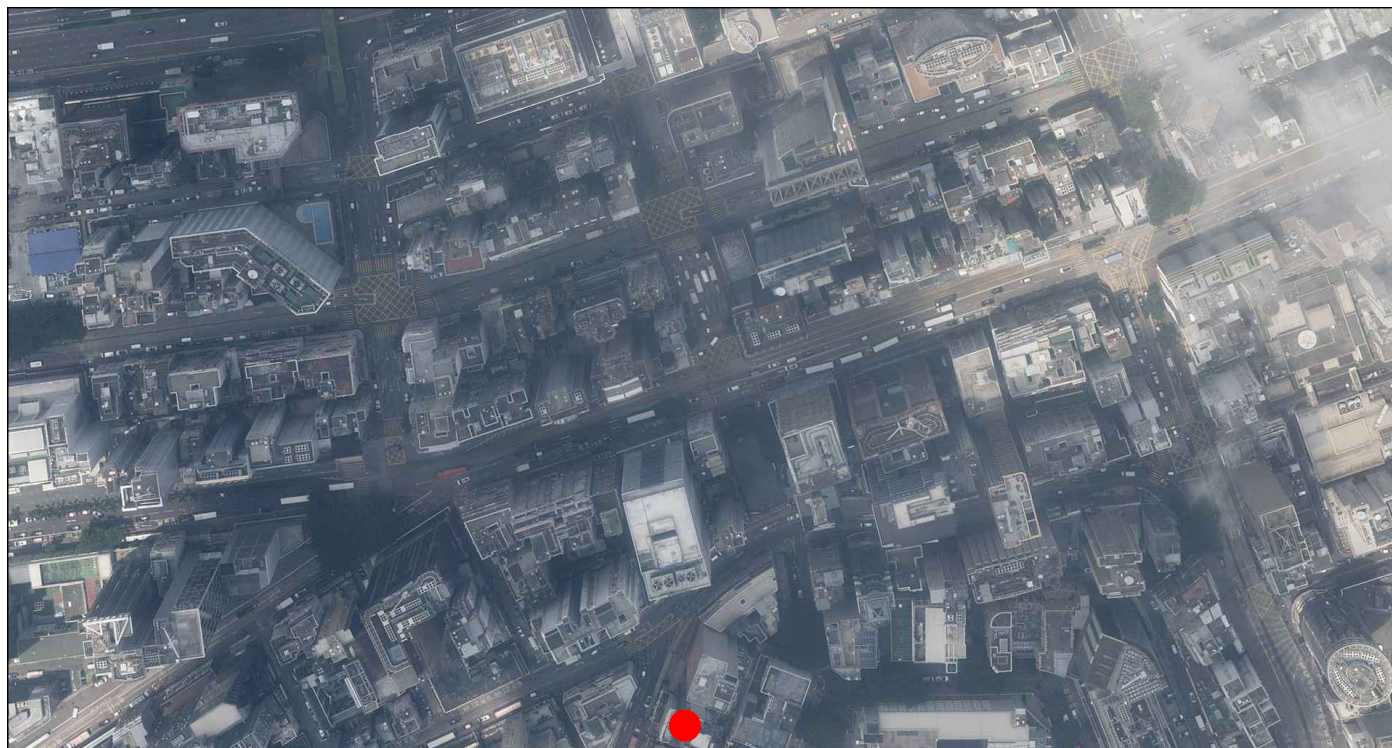
1. The aerial photograph shows more than the area required under the Residential Properties (First-hand Sales) Ordinance due to the technical reason.

備註:

1. 因技術原因，此鳥瞰照片所顯示之範圍多於《一手住宅物業銷售條例》所要求顯示之範圍。

● Location of the Development
發展項目的位置

7 AERIAL PHOTOGRAPH OF THE DEVELOPMENT 發展項目的鳥瞰照片



This blank area falls outside the coverage of the aerial photograph
鳥瞰照片並不覆蓋本空白範圍

Adopted from part of the aerial photograph taken by the Survey and Mapping Office of the Lands Department at a flying height of 6,000 feet, photo No. E225795C, dated 7 August 2024.

摘錄自地政總署測繪處於2024年8月7日在6,000呎的飛行高度拍攝之鳥瞰照片，照片編號為E225795C。

Survey and Mapping Office, Lands Department, The Government of HKSAR© Copyright reserved - reproduction by permission only.

香港特別行政區政府地政總署測繪處 © 版權所有，未經准許，不得翻印。

Notes:

1. The aerial photograph shows more than the area required under the Residential Properties (First-hand Sales) Ordinance due to the technical reason.

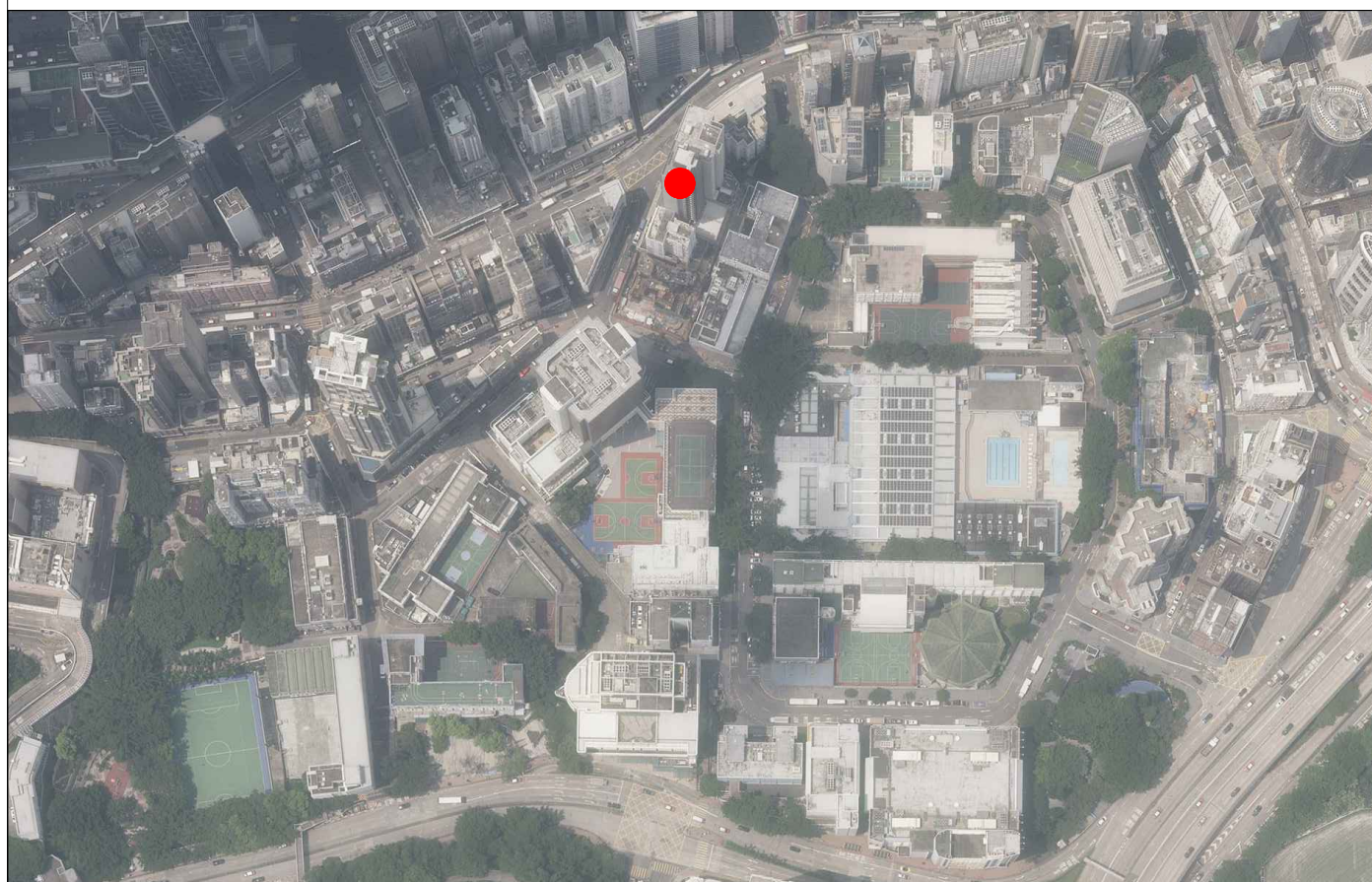
備註:

1. 因技術原因，此鳥瞰照片所顯示之範圍多於《一手住宅物業銷售條例》所要求顯示之範圍。

● Location of the Development
發展項目的位置

7 AERIAL PHOTOGRAPH OF THE DEVELOPMENT 發展項目的鳥瞰照片

This blank area falls outside the coverage of the aerial photograph
鳥瞰照片並不覆蓋本空白範圍



● Location of the Development
發展項目的位置

Adopted from part of the aerial photograph taken by the Survey and Mapping Office of the Lands Department at a flying height of 6,000 feet, photo No. E226414C, dated 7 August 2024.

摘錄自地政總署測繪處於2024年8月7日在6,000呎的飛行高度拍攝之鳥瞰照片，照片編號為E226414C。

Survey and Mapping Office, Lands Department, The Government of HKSAR© Copyright reserved - reproduction by permission only.

香港特別行政區政府地政總署測繪處 © 版權所有，未經准許，不得翻印。

Notes:

1. The aerial photograph shows more than the area required under the Residential Properties (First-hand Sales) Ordinance due to the technical reason.

備註:

1. 因技術原因，此鳥瞰照片所顯示之範圍多於《一手住宅物業銷售條例》所要求顯示之範圍。